

**SIRUBA®**

銀箭牌工業用縫紉機

INDUSTRIAL SEWING MACHINE

**L818F**

零件圖 PARTS LIST



CE



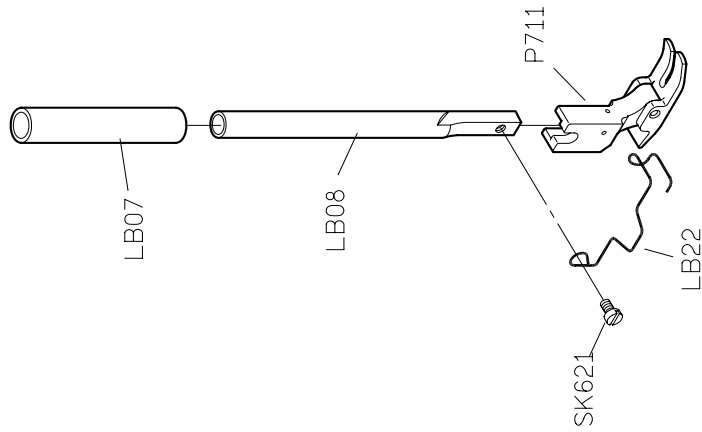
高林股份有限公司  
KAULIN MFG. CO., LTD.

								
MODEL	SUB-CLASS	NEEDLE PLATE	FEED DOG	PRESSER FOOT	HOOK ASM	BOBBIN CASE ASM	BOBBIN	NEEDLE
機 型	規 格	針 板	送 具	押 具	梭 頭	梭 殼	梭 子	針 號
L818F-L1	薄布料	E701	D701	P721	G111	G201	G303	DA*1#9
L818F-M1	薄至中厚布料	E704	D701	P701	G111	G201	G301	DB*1#11
L818F-HM1		E704D	D702					
L818F-M1A		E711	D711					
L818F-M1C		E711D	D711D					
L818F-HM1A	中厚至厚布料	E711	D711	P711	G112J	G201	G301	DB*1#21
L818F-H1		E711D	D711D	P711D				
L818F-H1A								
L818F-H1C								

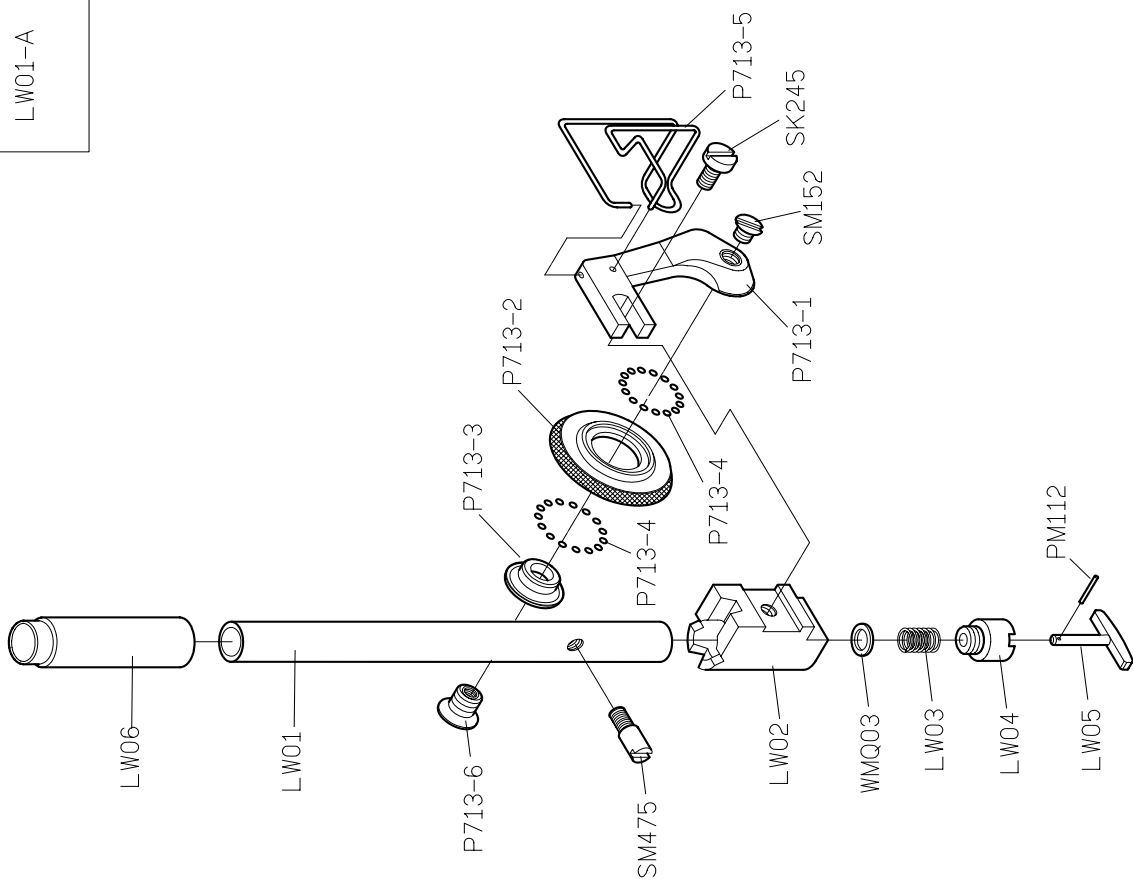
規格件表 CONVERSION CHART

# 型別件對照表 MODEL COMPARE LIST

H1



H1R



LW01-A

MODEL	SUB-CLASS	SPRING	SPRING	SPRING	SPRING	THREAD GUIDE	THREAD GUIDE	SPRING	THREAD GUIDE	THREAD GUIDE	THREAD GUIDE BAR	EJECTOR PIN	ADJUSTING KNOB
機 型	規 格	控線彈簧	控線彈簧	挑線彈簧	固定片	擋環片	壓簧	導線片	導線桿	頂出銷	調整旋鈕		
L818F /L1	薄布料	LA231	LA22	LA227	—	—	LB204	A GLB06	—	LB212	LC23G	LC801	
						B SK241		A GLB06					B SK241
L818F /M1	薄布料 ~ 中厚料	LA31	LA22	LA27	A LA617	A LA17	LB04	A GLB06	—	LB212	LC623G	LC600G	
					B SK690	B SK241							
					C LU38	B SK241							
L818F /H1	中厚料 ~ 厚布料	LA131	LA122	LA27	A LA600	—	LB104	—	A LB100	LB212	LC600G	LC600G	
					B SK690	B GLB106							
					C LU38	C NK23		D WK09					

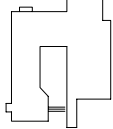

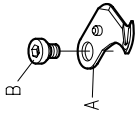
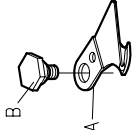





# 型別件對照表 MODEL COMPARE LIST

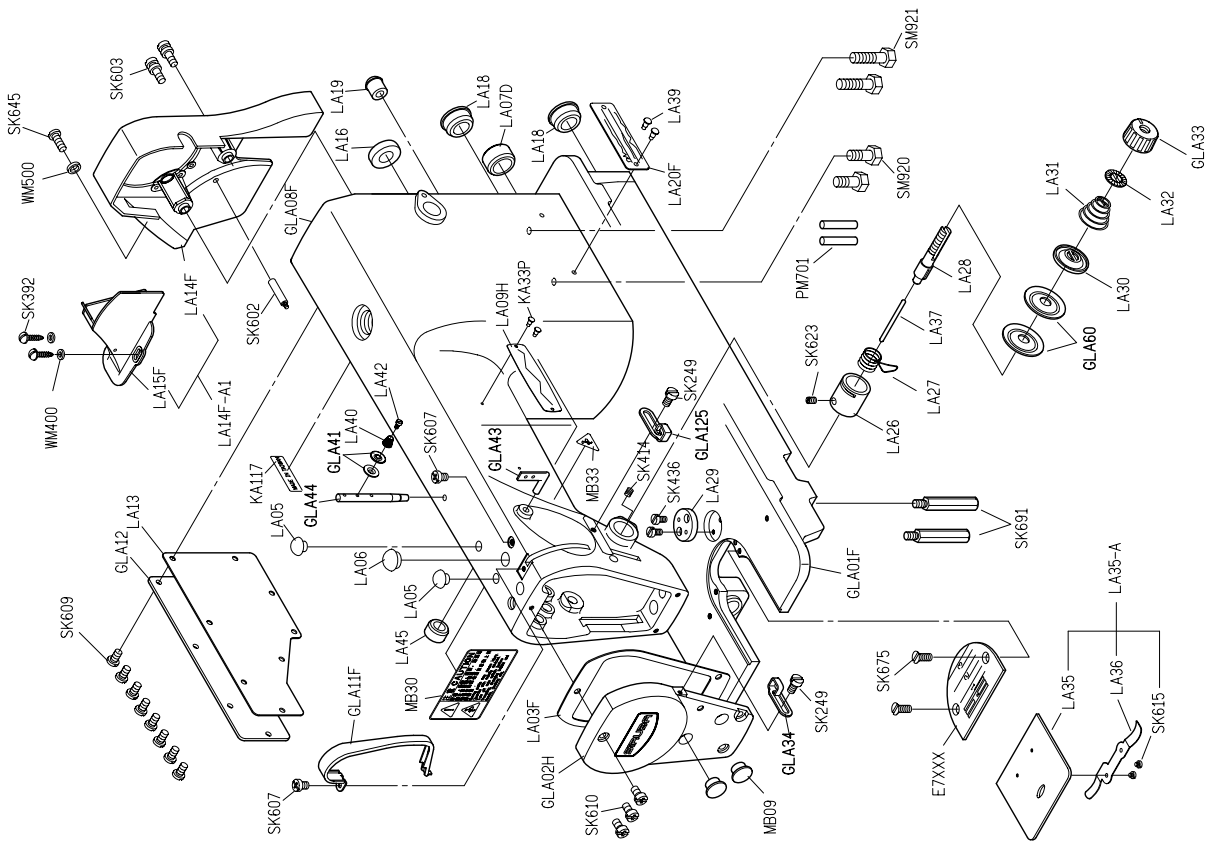
機 型	規 格	機 型	規 格	機 型	規 格	機 型	規 格	機 型	規 格	機 型	規 格	機 型	規 格	機 型	規 格	機 型	規 格	機 型	規 格	
L818F /L1	薄布料	LH11	調整銷	LC12	連桿座	LC13	固定銷	LE14	旋梭定位板	COVER	護蓋	THREAD TAKE UP LEVER	天秤	CRANK SHAFT	曲軸	BUSING	襯套	THREAD GUIDE	導線環片	GLC09
L818F /HM1	薄布料 ~ 中厚料	LH11	—	—	—	—	—	LE614	—	—	—	—	—	—	—	—	—	—	—	—
L818F /M1	中厚料 ~ 厚布料	LH11	—	LC612	—	LC613	—	—	—	—	—	—	—	—	—	—	—	—	—	—
L818F /H1	—	LH11	—	LC612	—	LC613	—	LE614	—	—	—	—	—	—	—	—	—	—	—	—

MODEL 機 型	SUB-CLASS 規 格	NEEDLE BAR 針 棒	SPRING 拉 伸 彈 簧	ECCENTRIC 偏 心 凸 輪	SOLENOID BRACKET 電 磁 閥 座	PRESSER PLATE 押 板	FIXED PLATE 固 定 刀	FIXED PLATE 固 定 片	CONNECTING ROD 連 桿	CONNECTING ROD 連 桿
L818F /L1	薄 布 料	LG04	LC10	LH06	LU26	LU04	LU05	LU28	連 桿	A LU15
										B SK662
										C EM050
										D SK664
L818F /HM1	薄 布 料 ~ 中 厚 料	LG104H	—	LH606	LU26	LU04	LU05	LU28	連 桿	A LU15
										B SK662
										C EM050
										D SK664
L818F /M1	中 厚 料	LG04	—	LH06	LU26	LU04	LU05	LU28	連 桿	A LU15
										B SK662
										C EM050
										D SK664
L818F /H1	中 厚 料 ~ 厚 布 料	LG104	LC10	LH606	LU626	LU604	LU605	LU628	連 桿	A LU615
										B SK677
										C NK26/MM402
										D SK682

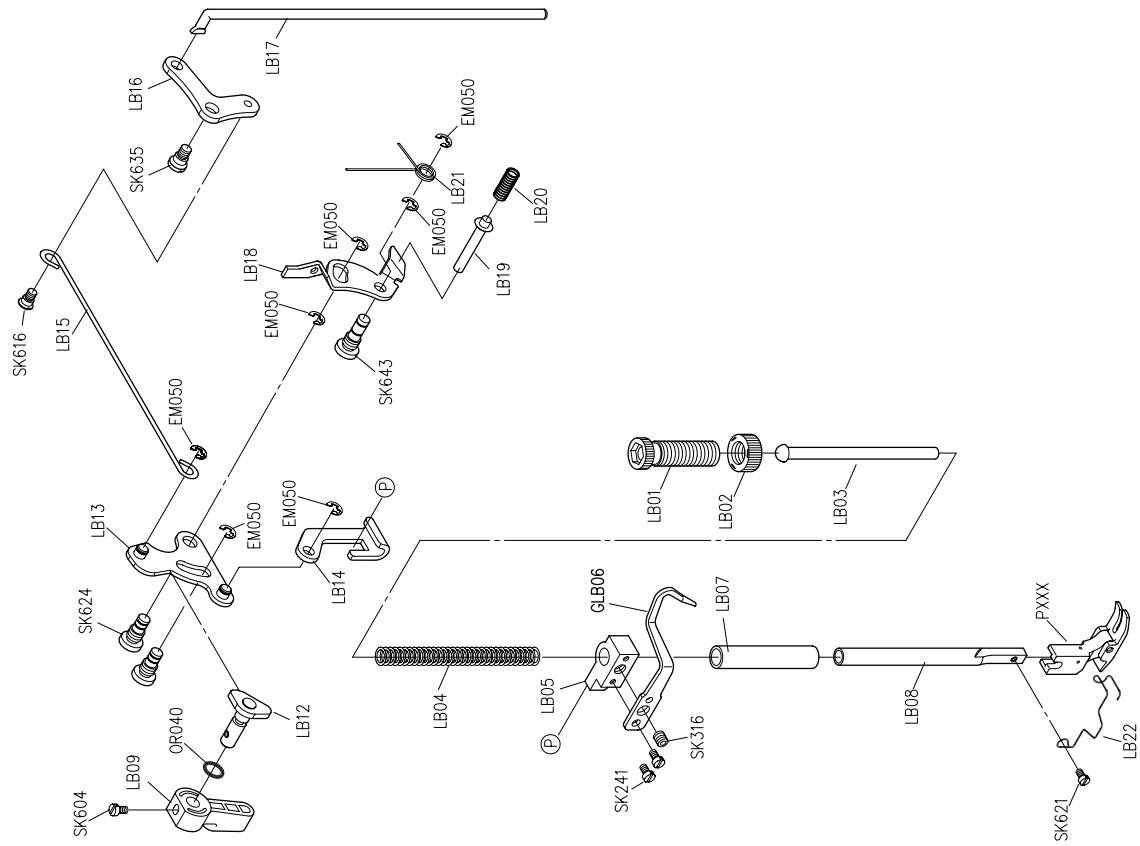
型別件對照表 MODEL COMPARE LIST

# 型別件對照表 MODEL COMPARE LIST

								
MODEL	SUB-CLASS	MOVABLE KNIFE	MOVABLE KNIFE	MOVABLE KNIFE CONNECTING ROD	MOVABLE KNIFE CONNECTING ROD	PRESSER PLATE	MOVABLE KNIFE	TRIMMER SOLENOID
機 型	規 格	活動刀	活動刀	活動刀連接桿	活動刀連接桿	刀座	轉子連接桿	切線電磁閥
L818F /L1	薄布料	A LU02 B SK660	—	LU01	—	LU03	LU18	GLU25
L818F /HM1	薄布料 ~ 中厚料	A LU02 B SK660	—	LU01	—	LU03	LU18	GLU25
L818F /M1	中厚料 ~ 厚布料	A LU02 B SK660	—	—	—	LU603	LU618	GLU625
L818F /H1	中厚料 ~ 厚布料	—	A LU602 B SK683	—	LU601	LU603	LU618	GLU625



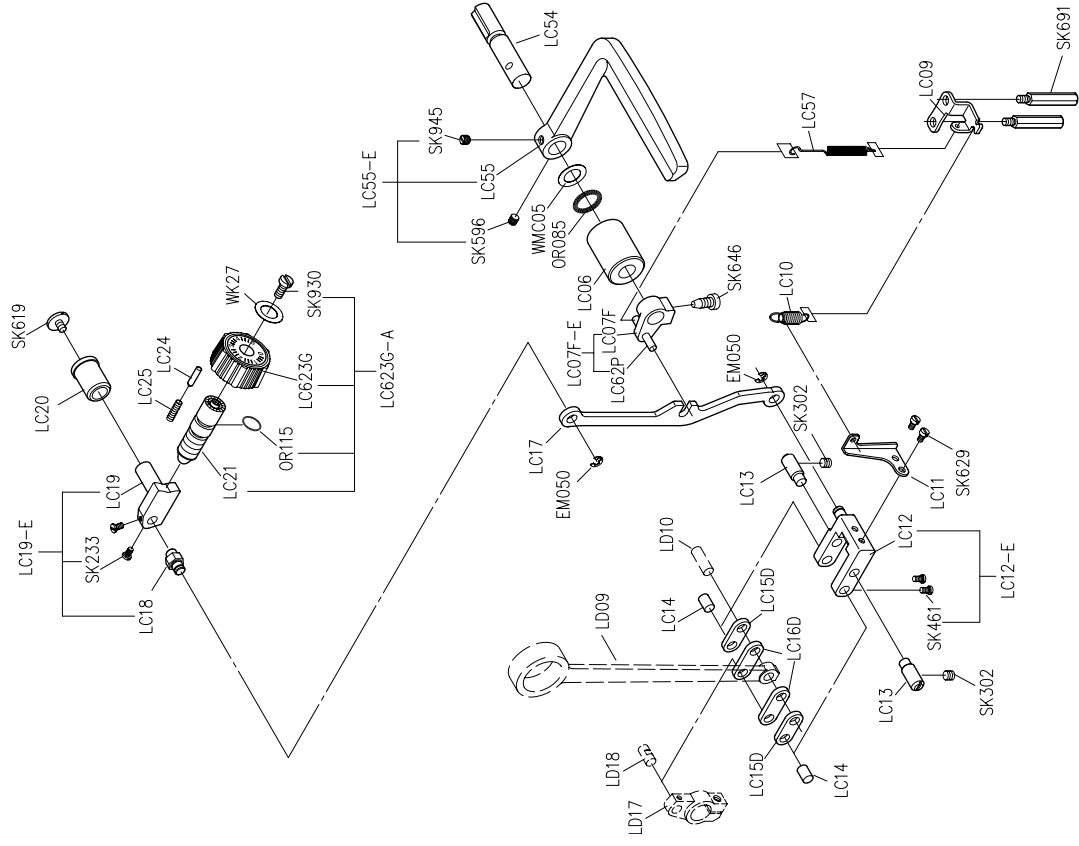
PARTS LIST FOR LA GROUP



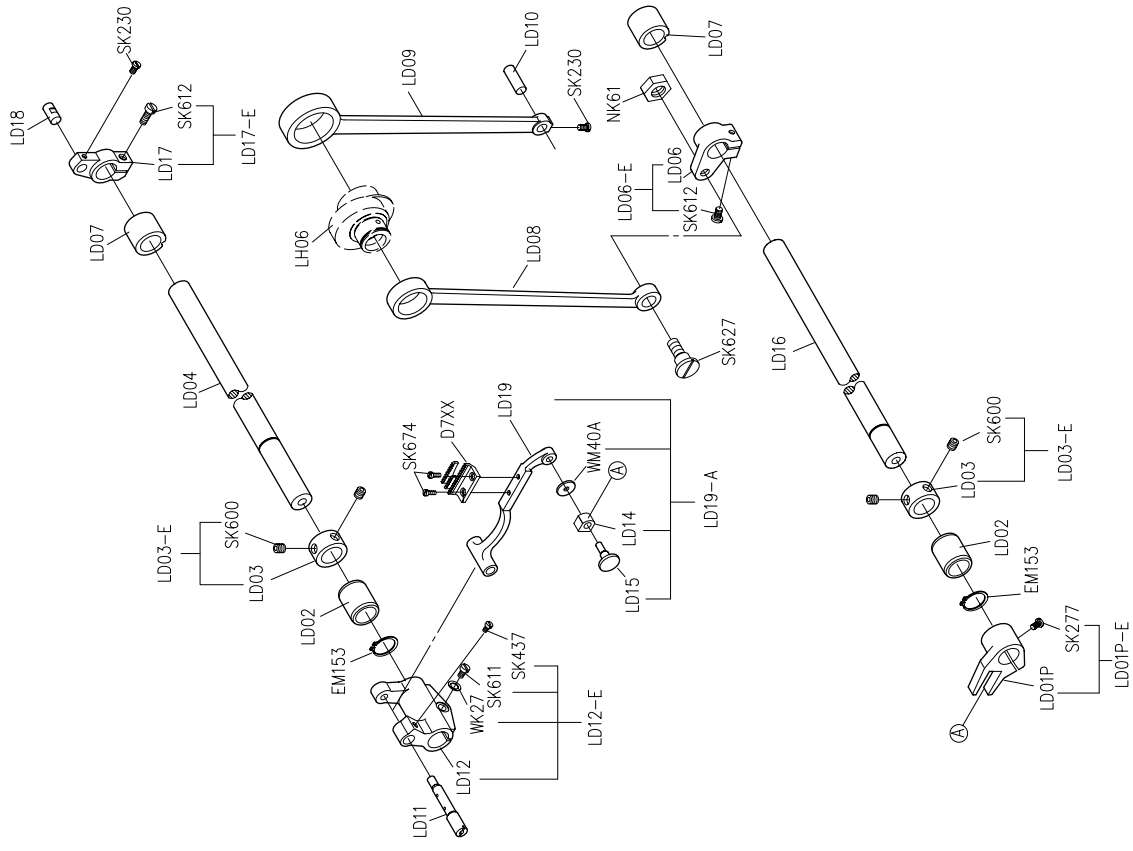
PARTS LIST FOR LB GROUP

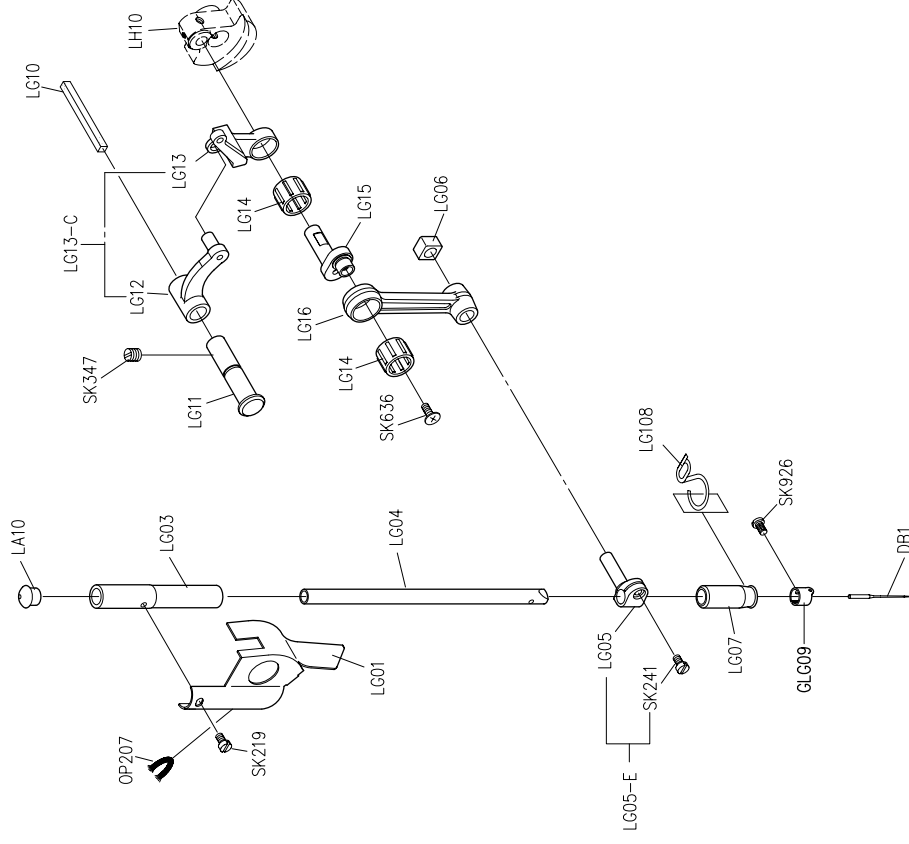
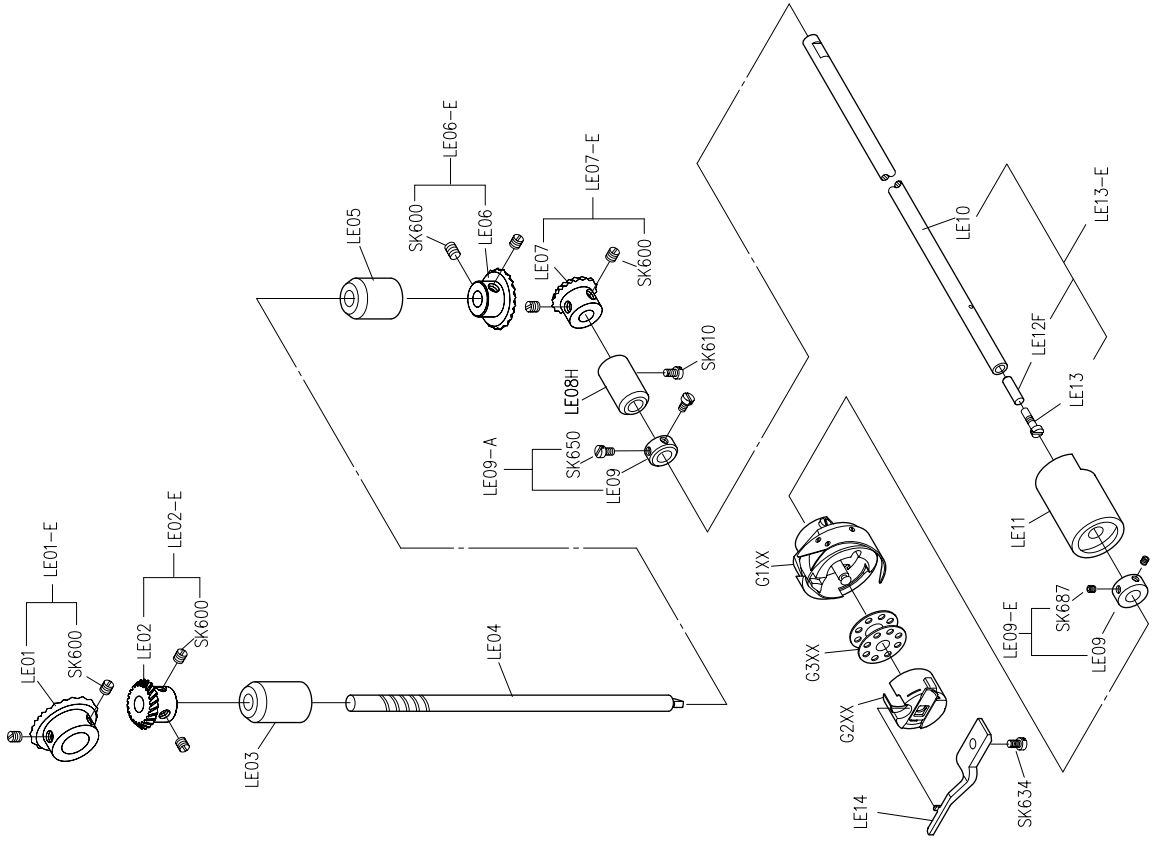


# PARTS LIST FOR LC GROUP



# PARTS LIST FOR LD GROUP

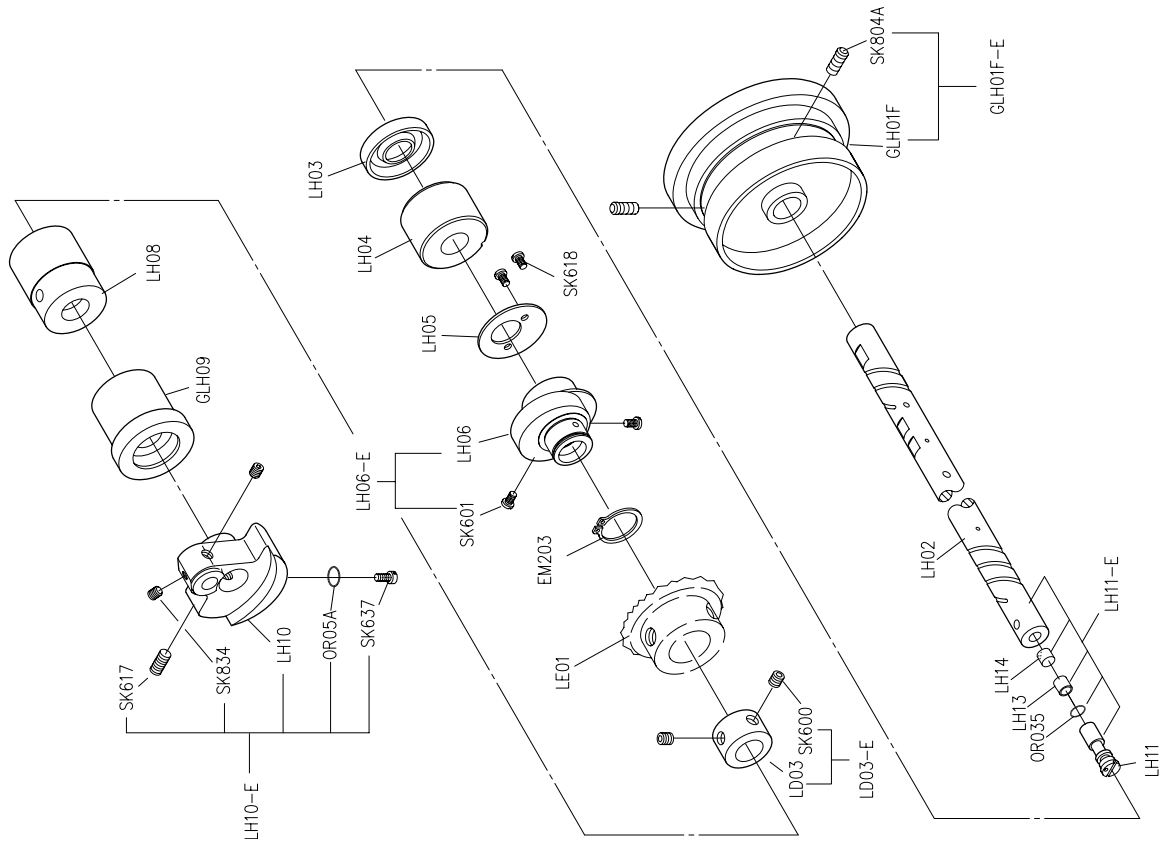




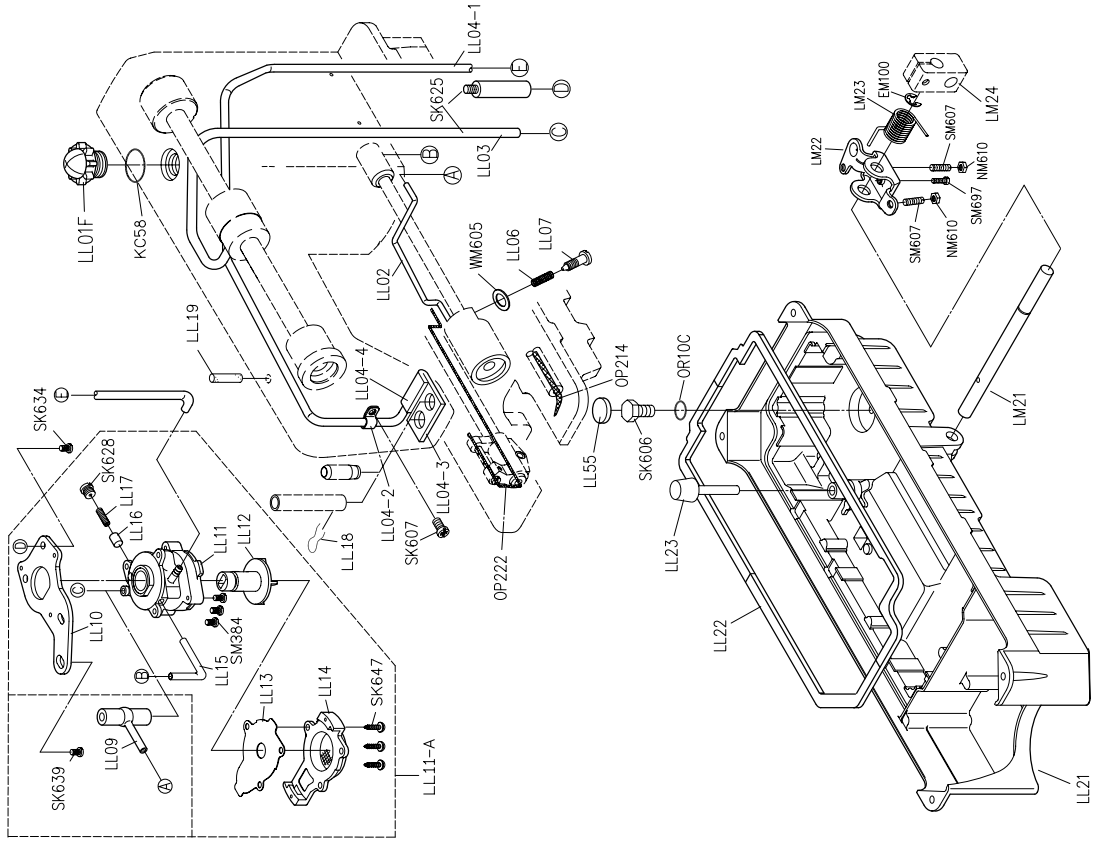
## PARTS LIST FOR LE GROUP

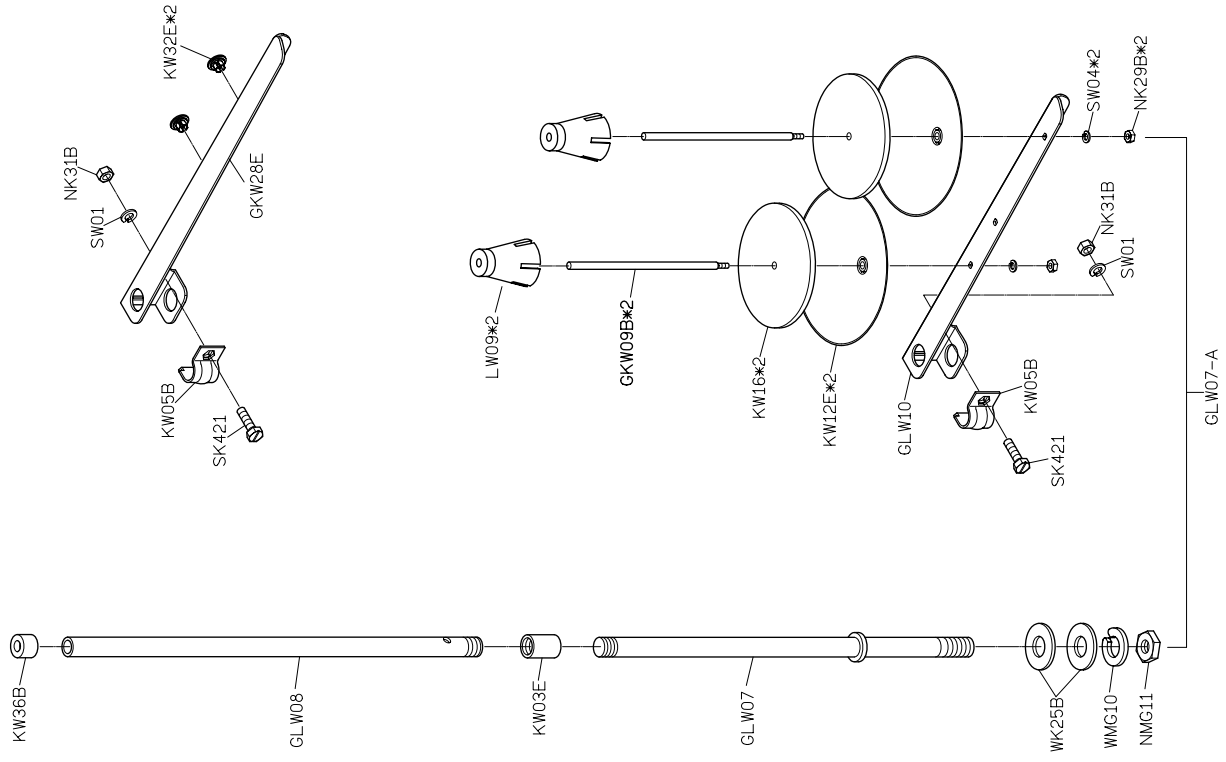
## PARTS LIST FOR LG GROUP

# PARTS LIST FOR LH GROUP

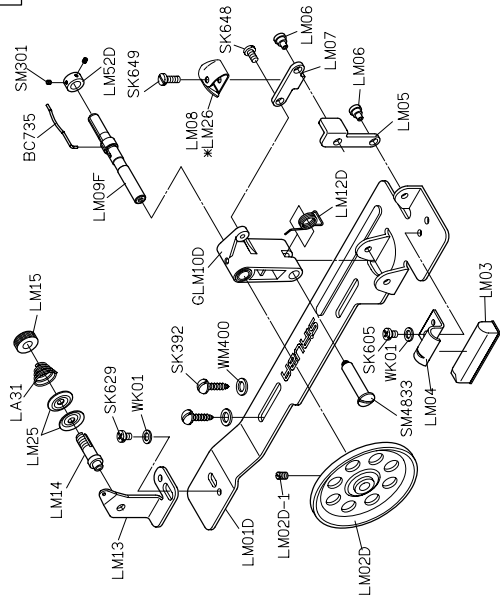


# PARTS LIST FOR LL GROUP

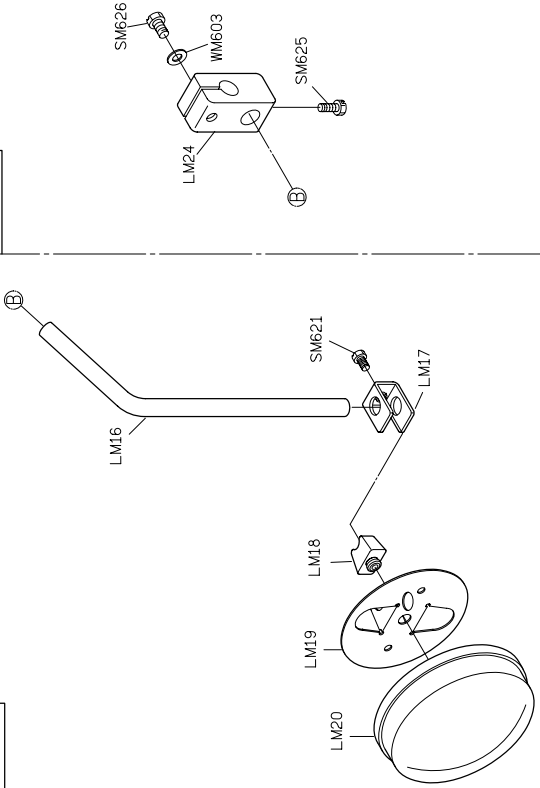




GLM01D-A



LM24-E





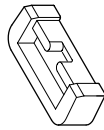
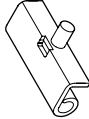

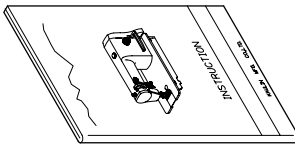
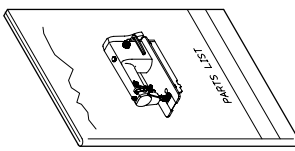
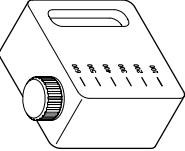


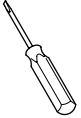
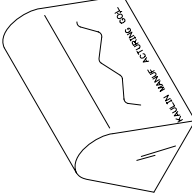



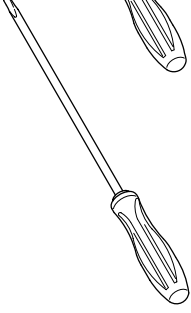
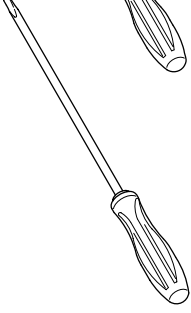



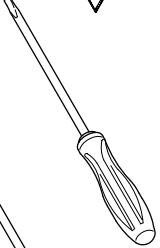
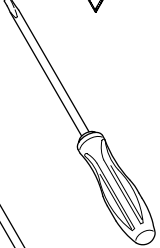








LM20-A

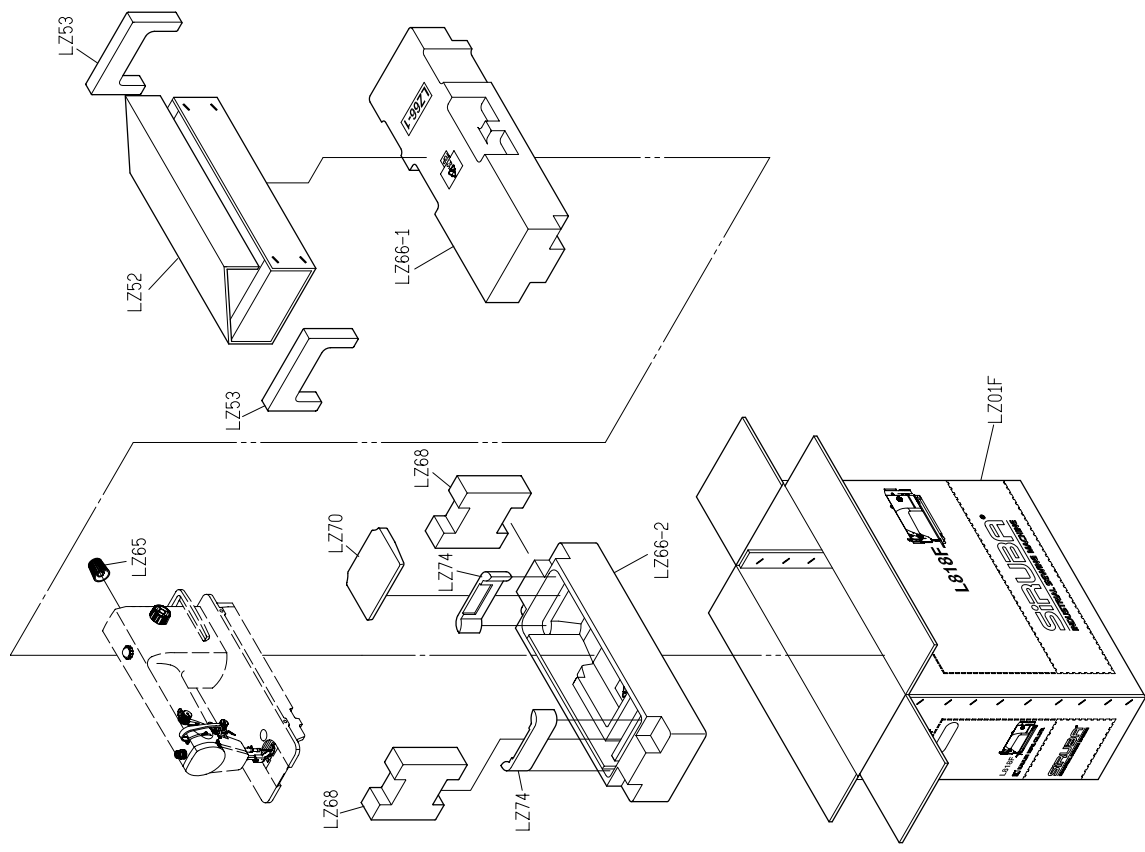
PARTS LIST FOR THREAD STAND GROUP

PARTS LIST FOR LM GROUP

# PARTS LIST FOR LY GROUP

# PARTS LIST FOR LZ GROUP

L Y01		L Y02		Y M04*2		L Y05*2		Y M102*2	
L Y08F		L Y11		L Y21-A		G3XX*2		Y M103*2	
MY13		GMY01		G3XX*2		L Y20*8		L Y20*8	
MY16		KY16		KZ03*1		LY20*8		LY20*8	
MY17		KY17		KY11		LY20*8		LY20*8	
GKY26F		GKY26F		KZ03*1		LY20*8		LY20*8	





# L818F

高林股份有限公司 KAULIN MFG. CO., LTD.